

**CONSUMER SATISFACTION SURVEY
KENTUCKY OFFICE OF VOCATIONAL REHABILITATION
2022**

Submitted to the
Statewide Council for Vocational Rehabilitation
Consumer Services and Program Evaluation Committee

April 13, 2023

Prepared by
Katie Wolf Whaley, MSW, CESP
Human Development Institute
University of Kentucky

Table of Contents

EXECUTIVE SUMMARY	3
SUMMARY REPORT	4
NUMBER OF RESPONDENTS BY CASE CLOSURE CATEGORY.....	4
OVERALL SERVICE QUALITY.....	6
COUNSELOR AND OFFICE EXPERIENCES	8
EMPLOYMENT INFORMATION	13
CASE CLOSURE	15
OVERALL SATISFACTION OF THOSE USING CRP SERVICES.....	17
SATISFACTION OF THOSE USING BLIND SERVICES.....	18
APPENDIX A.....	19
APPENDIX B.....	21

EXECUTIVE SUMMARY

Since 1996, the Human Development Institute (HDI) at the University of Kentucky has coordinated the annual Kentucky Office of Vocational Rehabilitation Consumer Satisfaction Survey at the request of the Statewide Council for Vocational Rehabilitation. The survey is conducted with a sample of consumers of the Office of Vocational Rehabilitation who have had cases closed with the Office in the most recently completed fiscal year (between October 2021 and September 2022.) The sample of people randomly selected to participate was stratified to reflect the population of all consumers with cases closed in fiscal year 2022. IQS Research contacted consumers by email and/or telephone in January through March of 2023 to participate in the survey. A total of 1,042 individuals participated in the survey which was available as both a telephone and online survey, with responses included from each of the districts. Phone surveys accounted for 38.1% of responses and 61.8% of responses were collected via online surveys. The overall response rate for the survey was 23.8%. There was a 46% response rate via phone contacts and 18% via email contacts.

The integral part of this survey seeks to determine the satisfaction level of consumers. This is accomplished by utilizing a four-point scale on a variety of items related to consumer experiences where 1 = very poor, 2 = poor, 3 = good, and 4 = very good. The average of all responses was calculated from the responses given. The average overall satisfaction level for all respondent groups was 3.49 out of a possible 4 points. Overall, 88.8% of survey participants indicated that services were good or very good. As we have experienced in prior surveys, those consumers who had cases closed Successful in Competitive Integrated Employment (CIE) were most satisfied (mean = 3.74). As we have seen over the history of this survey, those closed Successful in CIE were more satisfied and experienced better outcomes in virtually all areas.

As is typically found, those whose cases were closed Successful in CIE were slightly more satisfied with their jobs and pay received. Regardless of case closure status, 92.4% of people indicated that they would return to the Office of Vocational Rehabilitation if they needed to in the future. This is also considered a measure of satisfaction. As part of the survey, participants may provide additional comments. Themes related to the comments are found in Appendix A. Appendix B contains data showing overall satisfaction results since 1997.

Summary Report Prepared by: Katie Wolf Whaley
859-218-5960
kwolf@uky.edu

Funding Provided by: Kentucky Office of Vocational
Rehabilitation

SUMMARY REPORT

The Kentucky Office of Vocational Rehabilitation contracted with the Human Development Institute (HDI) at the University of Kentucky to provide information to the Office regarding the experiences of consumers of Vocational Rehabilitation with cases closed in fiscal year 2022. IQS Research contacted consumers by email and telephone for a 34-item survey. The telephone survey was conducted by trained interviewers from January through March of 2022. There was a target of 1,000 completed interviews. The sample was drawn randomly but stratified to appropriately reflect the proportions of consumers with cases closed among four closure categories. Of the eligible consumers who were contacted, (representing all four case closure categories and all districts of Kentucky) 1,042 people completed the survey. This resulted in an overall response rate for the survey of 23.8% (46% response rate via phone contacts and 18% response rate via email contacts.) The margin of error for this survey is $\pm 2.87\%$ at the 95% confidence level.

For the remainder of this report, consumer closure status groups will be referred to in the following manner:

- Consumers Closed Successful in Competitive Integrated Employment (CIE)
- Consumers Closed Unsuccessful after Individual Plan for Employment (IPE) Initiated
- Consumers Closed from Acceptance Prior to IPE
- Consumers Closed from Application

NUMBER OF RESPONDENTS BY CASE CLOSURE CATEGORY

Closure Category Group	Number of Respondents	% of Respondents per Closure Category
Closed Successful in CIE	666	63.9%
Closed Unsuccessful after IPE Initiated	202	19.4%
Closed from Acceptance Prior to IPE	103	9.9%
Closed from Application	71	6.8%
Total	1,042	100%

Respondent Demographics

Gender

The sample of respondents was close to even, with 49.2% women and 50.0% men participating.

Age

The average age of consumers across all closure categories was 48 years old. The youngest person interviewed was 16 and the oldest was 87. This is a similar age range as recent years.

Race

Race	% of Consumers
White	87.4%
Black	9.9%
Hispanic or Latino	7.3%
Asian	.7%

Education

Survey participants' educational experiences ranged from respondents who indicated grade school up to those who had attained advanced postsecondary degrees. Six percent of those surveyed did not graduate from high school. Respondents who graduated high school or received a GED comprised 28.5% of respondents. Those who continued their education past high school made up 64.8% of the sample. Approximately 46% of people in this sample had received a Vocational-Technical certificate, Occupational Credential, Associate degree, Bachelor's degree, Master's degree, or higher. The numbers for high school graduation through advanced college degrees are about the same as last year.

Education Level	% of Consumers
Grade School	.6%
Some High School	4.2%
Special Education Certificate	1.2%
High School Graduate / GED	28.5%
Some College	18.8%
Associate Degree / Voc-Tech/Occupational Credential	16.2%
College Graduate – Bachelor's Degree	17.3%
Master's Degree or Higher	12.5%
No response	.7%
TOTAL	100%

OVERALL SERVICE QUALITY

The item of greatest interest concerns overall service quality. Participants were asked to rate the overall quality of the services they received from the Office of Vocational Rehabilitation on a four-point scale (1 = very poor, 2 = poor, 3 = good, and 4 = very good) to calculate a mean or average score. For those individuals whose cases were closed prior to the initiation of services, this question referred to their overall feelings about the vocational rehabilitation system and the professionals with whom they interacted.

Regardless of case closure status, respondents indicated that overall services provided by the Office were good or very good (88.8%). This is comparable to 2021 and 2020. The overall rating is highest for those individuals who closed Successful in CIE (96.6%). As has been the case over the past several years, we find that those respondents who were able to obtain employment were more likely to be satisfied with the services provided through the Office of Vocational Rehabilitation than those who did not.

Overall Satisfaction with Quality of Services

Closure Category	% Responded Very Poor	% Responded Poor	% Responded Good	% Responded Very Good	Mean Rating
Closed Successful in CIE (n=662)	.8%	2.6%	18.1%	78.5%	3.74
Closed Unsuccessful after IPE Initiated (n=194)	10.8%	12.9%	38.7%	37.6%	3.03
Closed from Acceptance Prior to IPE (n=100)	10%	16%	40%	34%	2.98
Closed from Application (n=67)	10.4%	20.9%	17.9%	50.7%	3.09
All (n=1,023)	4.2%	7.0%	24.2%	64.6%	3.49

N= number of responses

Overall Satisfaction by District

The range of overall satisfaction by district can be found in the table below. As in past years, all Districts averaged a score in the Good or Very Good range.

While the rank order changes from year to year, *it is important to note the sample size does not allow a rank order at a statistically significant level.*

District	Number of Respondents	Percent respond Good or Very Good Overall Satisfaction	Mean Rating
1 - Paducah	60	73.3%	3.03
3 -Owensboro	61	93.5%	3.64
4 - Bowling Green	77	97.4%	3.66
5 - Louisville	43	81.4%	3.26
6 – Elizabethtown	70	80%	3.29
7 – Danville	76	88.1%	3.51
8 – Florence	28	82.2%	3.25
9 – Lexington	152	95.4%	3.67
10 - Prestonsburg	63	88.9%	3.65
12 – Ashland	75	88%	3.49
13 - Hazard	30	96.7%	3.73
14 - Bluegrass	80	93.8%	3.63
15 – East Jefferson	57	82.4%	3.35
16 – Covington	22	86.3%	3.32
17 - Somerset	47	93.6%	3.66
85 – RCD	7	100%	3.43
86 –Blind West	15	86.7%	3.27
87 –Blind Central	30	80%	3.17
88 – Blind East	30	86.7%	3.40

COUNSELOR AND OFFICE EXPERIENCES

Survey participants were asked a series of questions related to their experiences with their counselor and the Vocational Rehabilitation office. Responses to these questions were rated on a Likert scale according to the following:

“strongly disagree” = 1, “disagree” = 2, “agree” = 3, or “strongly agree” = 4.

The Vocational Rehabilitation Office was Physically Accessible to Me

93.1% agreed or strongly agreed that their counselor’s office was physically accessible.

Consumer Closure Status	Mean Rating
Closed Successful in CIE	3.52
Closed Unsuccessful after IPE initiated	3.22
Closed from Acceptance Prior to IPE	3.34
Closed from Application	3.33
Overall	3.43

All Materials I Received from Vocational Rehabilitation Were in an Accessible Format

Approximately 95.8% of respondents agreed or strongly agreed that materials they received from the Office were in an accessible format. This shows that, overall, consumers are receiving materials and information in a way that meets their accessibility needs.

Consumer Closure Status	Mean Rating
Closed Successful in CIE	3.61
Closed Unsuccessful after IPE initiated	3.36
Closed from Acceptance Prior to IPE	3.41
Closed from Application	3.52
Overall	3.54

I Was Able to Get an Appointment with My Counselor in A Reasonable Amount of Time

Overall, 89.3% of respondents agreed or strongly agreed that they were able to get an appointment in what they considered a reasonable amount of time. This is about the same as last year.

Consumer Closure Status	Mean Rating
Closed Successful in CIE	3.54
Closed Unsuccessful after IPE initiated	3.15
Closed from Acceptance Prior to IPE	2.97
Closed from Application	3.06
Overall	3.38

I Was Treated Courteously by All Staff

Most consumers (94.5%) agreed or strongly agreed that they were treated courteously by Office staff. This is about the same as last year.

Consumer Closure Status	Mean Rating
Closed Successful in CIE	3.68
Closed Unsuccessful after IPE initiated	3.30
Closed from Acceptance Prior to IPE	3.40
Closed from Application	3.53
Overall	3.57

My Counselor Understood My Disability

Participants were asked if they felt that their counselor understood their disability. 88.9% percent agreed or strongly agreed that their counselor did understand their disability. Consumers closed with CIE reported the highest agreement that their counselors understood their disability.

Consumer Closure Status	Mean Rating
Closed Successful in CIE	3.62
Closed Unsuccessful after IPE initiated	3.06
Closed from Acceptance Prior to IPE	3.15
Closed from Application	3.15
Overall	3.43

My Counselor Helped Me to Choose an Appropriate Job Goal

Approximately 80.6% of consumers agreed or strongly agreed that their counselors were able to help them choose an appropriate job goal. It is not surprising that those who had achieved CIE were most in agreement with this item.

Consumer Closure Status	Mean Rating
Closed Successful in CIE	3.46
Closed Unsuccessful after IPE initiated	2.73
Closed from Acceptance Prior to IPE	2.84
Closed from Application	2.84
Overall	3.18

My Counselor Helped Me to Understand My Rights

Consumers were asked if their counselor helped them to understand their rights. 92.1% agreed or strongly agreed that their counselor had been helpful with regard to rights. This is the same as last year.

Consumer Closure Status	Mean Rating
Closed Successful in CIE	3.52
Closed Unsuccessful after IPE initiated	3.17
Closed from Acceptance Prior to IPE	3.27
Closed from Application	3.22
Overall	3.41

I Knew Whom to Contact if I Had a Problem with My Counselor

Consumers were asked if they knew whom to contact if they experienced a problem with their counselor. Overall, 77.1% agreed or strongly agreed that they did know what to do.

Consumer Closure Status	Mean Rating
Closed Successful in CIE	3.29
Closed Unsuccessful after IPE initiated	2.78
Closed from Acceptance Prior to IPE	2.94
Closed from Application	2.73
Overall	3.11

My Counselor Helped Me Clearly Understand the Services Available to Me from Vocational Rehabilitation

Consumers were asked if their counselor helped them to understand the services available to them. Approximately 90% indicated this occurred. This item was not asked of those Closed from Application.

Consumer Closure Status	Mean Rating
Closed Successful in CIE	3.57
Closed Unsuccessful after IPE initiated	3.02
Closed from Acceptance Prior to IPE	3.05
Overall	3.40

My Counselor Helped Me to Develop a Plan of Action to Get a Job or Training for a Job

Consumers who received services through the Office were asked about the planning process. Those closed with CIE had a higher level of agreement than those closed unsuccessful after IPE initiation.

Consumer Closure Status	Mean Rating
Closed Successful in CIE	3.40
Closed Unsuccessful after IPE initiated	2.76
Overall	3.18

I Felt Free to Choose the Type of Services I Received

In terms of consumer choice, those closed with CIE were more likely to strongly agree or agree that they felt free to choose the services that were received.

Consumer Closure Status	Mean Rating
Closed Successful in CIE	3.51
Closed Unsuccessful after IPE initiated	2.96
Overall	3.38

I Had an Active Role in My Rehabilitation Plan

Consumers closed successful in CIE and those closed unsuccessful after IPE initiation were asked if they felt that they were actively involved in their Individualized Plan for Employment (IPE). Those with cases closed successfully were more likely to agree or strongly agree than those in the other group.

Consumer Closure Status	Mean Rating
Closed Successful in CIE	3.51
Closed Unsuccessful after IPE initiated	2.96
Overall	3.37

The Services Were Provided in a Timely Manner

Consumers closed successful in CIE and those closed unsuccessful after IPE initiation were asked if the services they received through their Individualized Plan for Employment (IPE) were provided in a timely manner.

Consumer Closure Status	Mean Rating
Closed Successful in CIE	3.52
Closed Unsuccessful after IPE initiated	2.90
Overall	3.38

EMPLOYMENT INFORMATION

Employment Status

Consumers were asked whether they were currently employed, either full or part-time. Those whose cases were closed with CIE were much more likely to be employed than those in the other groups. 90.6% of those closed with CIE were employed at the time of the survey. The overall employment status was up 10% over last year.

Consumer Closure Status	Yes	No
Closed Successful in CIE	90.6%	9.4%
Closed Unsuccessful after IPE initiated	38.7%	61.3%
Closed from Acceptance Prior to IPE	46.1%	53.9%
Closed from Application	59.4%	40.6%
Overall %	74.2%	25.8%

How Satisfied Are You with the Kind of Work You Do?

If a respondent indicated currently employed, items related to job satisfaction were then asked. The mean satisfaction with the type of work and with salary was higher for those who achieved competitive integrated employment. As has been seen in previous surveys, overall satisfaction with type of work was rated higher than satisfaction with salary.

Overall, 93% of those employed stated they were satisfied or strongly satisfied with their work. This is similar to the last 2 years.

Consumer Closure Status	Mean Rating
Closed Successful in CIE	3.57
Closed Unsuccessful after IPE initiated	3.08
Closed from Acceptance Prior to IPE	3.31
Closed from Application	3.15
Overall	3.48

How Satisfied Are You with the Salary You Receive?

Overall, 86.6% of those employed stated they were satisfied or strongly satisfied with their salary. This is the same as last year.

Consumer Closure Status	Mean Rating
Closed Successful in CIE	3.22
Closed Unsuccessful after IPE initiated	2.95
Closed from Acceptance Prior to IPE	3.11
Closed from Application	3.00
Overall	3.17

Do You Feel That Vocational Rehabilitation Services Helped Prepare You for a Job?

Consumers who received services from the Office were asked if they felt that the services they received through Vocational Rehabilitation helped prepare them for their current jobs.

Consumer Closure Status	Yes	No
Closed Successful in CIE	76.6%	23.4%
Closed Unsuccessful after IPE initiated	53.6%	46.4%

Any Other Supports or Services That Could Have Been Helpful?

Survey respondents were asked if there were any other supports or services that could have helped them get or keep a job. Of those who responded yes, types of services that would be helpful included: transportation assistance, making more information available/explaining scope of VR services, apprenticeship programs or job training, access to on the job supports or help navigating workplace culture, for counselors to better understand limitations imposed by the respondent's disability and to provide individualized care.

Additional Employment Questions

Those whose cases were closed with CIE, and indicated they were currently employed, were asked additional questions to learn more about their employment situation.

Do you earn more than minimum wage? 96.8% replied Yes
 Do you receive benefits through your job? 67.0% replied Yes

Those closed with CIE but who were not employed at the time of the interview were asked how long they worked before leaving the job.

Length of time Employed	Those closed in CIE but no longer employed (n=62)
Less than 3 months	12.9%
3-6 months	14.5%
6-9 months	8.1%
9 months – 1 year	6.5%
More than 1 year	58.1%

CASE CLOSURE

I Knew My Case Was Closed

The act of closing a consumer's case ends the formal contact the counselor has with a consumer. Overall, 72.8% responded knowing when their case was closed.

Consumer Closure Status	Yes	No
Closed Successful in CIE	80.1%	19.9%
Closed Unsuccessful after IPE initiated	66.0%	34.0%
Closed from Acceptance Prior to IPE	51.5%	48.5%
Closed from Application	52.2%	47.8%
Overall %	72.8%	27.2%

Should Your Case Have Been Closed?

Consumers were asked if their cases should have been closed. 77.6% agreed their case should have been closed; this is the same as last year. Those whose cases were closed with CIE were most in agreement with case closure at 86.9%.

Consumer Closure Status	Yes	No
Closed Successful in CIE	86.9%	13.1%
Closed Unsuccessful after IPE initiated	63.5%	36.5%
Closed from Acceptance Prior to IPE	59.8%	40.2%
Closed from Application	55.1%	44.9%
Overall %	77.6%	22.4%

Why shouldn't your case have been closed?

If the respondent felt that his or her case should not have been closed, the follow up question, "Why shouldn't your case have been closed?" was asked. The reasons given for the case not being closed fell within the following themes: did not know my case was closed, not yet employed, want a better job, insufficient services, need more training, still disabled and continue to need help, need more support on the job and that rehab did not help or hasn't returned my calls.

I Know That I Can Reapply for Services from Vocational Rehabilitation

Consumers were asked about their level of awareness of reapplying for services. Overall, over ¾ of all respondents were aware they could reapply for services.

Consumer Closure Status	Yes	No
Closed Successful in CIE	86.2%	13.8%
Closed Unsuccessful after IPE initiated	74.7%	25.3%
Closed from Acceptance Prior to IPE	84.2%	15.8%
Closed from Application	77.9%	22.1%
Overall %	83.2%	16.8%

I Would Go Back to Vocational Rehabilitation if I Needed Additional Services

Consumers were asked if they would return to Vocational Rehabilitation in the future. Overall, 92.4% of respondents asked this question indicated that they would. This continues to be a strong indication of satisfaction of services provided.

Consumer Closure Status	Yes	No
Closed Successful in CIE	97.3%	2.7%
Closed Unsuccessful after IPE initiated	83.9%	16.1%
Closed from Acceptance Prior to IPE	86.1%	13.9%
Closed from Application	79.1%	20.9%
Overall %	92.4%	7.6%

OVERALL SATISFACTION OF THOSE USING CRP SERVICES

Consumers who received services through a CRP (Community Rehabilitation Program) as part of their OVR services were asked to rate the quality of those services. Approximately 8% of survey respondents (85 people) did utilize CRP services. The following two questions were implemented in the 2013 survey.

Satisfied with Services I Received

Consumers were asked if they were satisfied with the services they received from their CRP and answers ranged from Strongly Disagree to Strongly Agree. Overall, 85.5% of those surveyed reported agreeing or strongly agreeing with this question. This is similar to the overall satisfaction score of all consumers regarding their experience with OVR services.

Consumer Closure Status	Strongly Agree	Agree	Disagree	Strongly Disagree
Closed Successful in CIE	44.6%	41.5%	9.2%	4.6%
Closed Unsuccessful after IPE initiated	43.8%	37.5%	6.3%	12.5%
Overall	44.8%	40.7%	8.6%	6.2%

Would Recommend to Someone Else

Consumers were asked if they would recommend CRP service to someone else. 86.1% indicated that they would recommend the CRP service to someone else.

Consumer Closure Status	Strongly Agree	Agree	Disagree	Strongly Disagree
Closed Successful in CIE	42.2%	46.9%	7.8%	3.1%
Closed Unsuccessful after IPE initiated	40.0%	33.3%	20.0%	6.7%
Overall	41.8%	44.3%	10.1%	3.8%

SATISFACTION OF THOSE USING BLIND SERVICES

Consumers who receive Blind Services as part of their OVR services were asked questions specific to these services. Only people who received these services responded to these questions. These questions were new to the survey in 2019, when the Office for the Blind merged with the Office of Vocational Rehabilitation in Kentucky.

1. Did you receive training from the McDowell Center in Louisville (yes or no; if no skip to #3)
2. How would you rate your training at the McDowell Center?
(4 – Excellent, 3-Good, 2-Fair, 1-Poor)
3. Did you receive services from the orientation and mobility staff?
(yes or no; if no, skip to #5)
4. How would you rate the orientation and mobility services you received in supporting you in gaining independence and safe travel in your community?
(4 – Excellent, 3-Good, 2-Fair, 1-Poor)
5. Did you receive Braille services? (yes or no; if no skip.)
6. How would you rate the Braille services you received?
(4 – Excellent, 3-Good, 2-Fair, 1-Poor)

Rate Services received at the McDowell Center

18 people surveyed received services at the McDowell Center. Of these, 86.6% rated services as Excellent or Good.

Rate Orientation and Mobility Services

10 people surveyed received Orientation and Mobility Services. 100.0% rated services as Excellent or Good.

Rate Braille Services

4 people surveyed received Braille Services. Of these, 100% rated services as Excellent or Good.

APPENDIX A

2022 Consumer Satisfaction Survey Open-Ended Comments Summary

At the conclusion of the survey, respondents were asked if they had any comments they would like to share with the Office of Vocational Rehabilitation. This summary reflects themes found in the open-ended comments:

- ✓ Helpful
- ✓ Thank you for the support services
- ✓ Miscellaneous comments, questions, or personal stories
- ✓ Need more follow up
- ✓ Not helpful
- ✓ Unsure of services offered
- ✓ Have recommended to others
- ✓ Need better communication
- ✓ I did not need help finding a job, but the hearing aids allowed me to stay employed
- ✓ No comments

APPENDIX B

**Consumer Satisfaction Survey of the Kentucky Office of Vocational Rehabilitation
Overall Satisfaction with Quality of Services Fiscal Years 1997 – 2022**

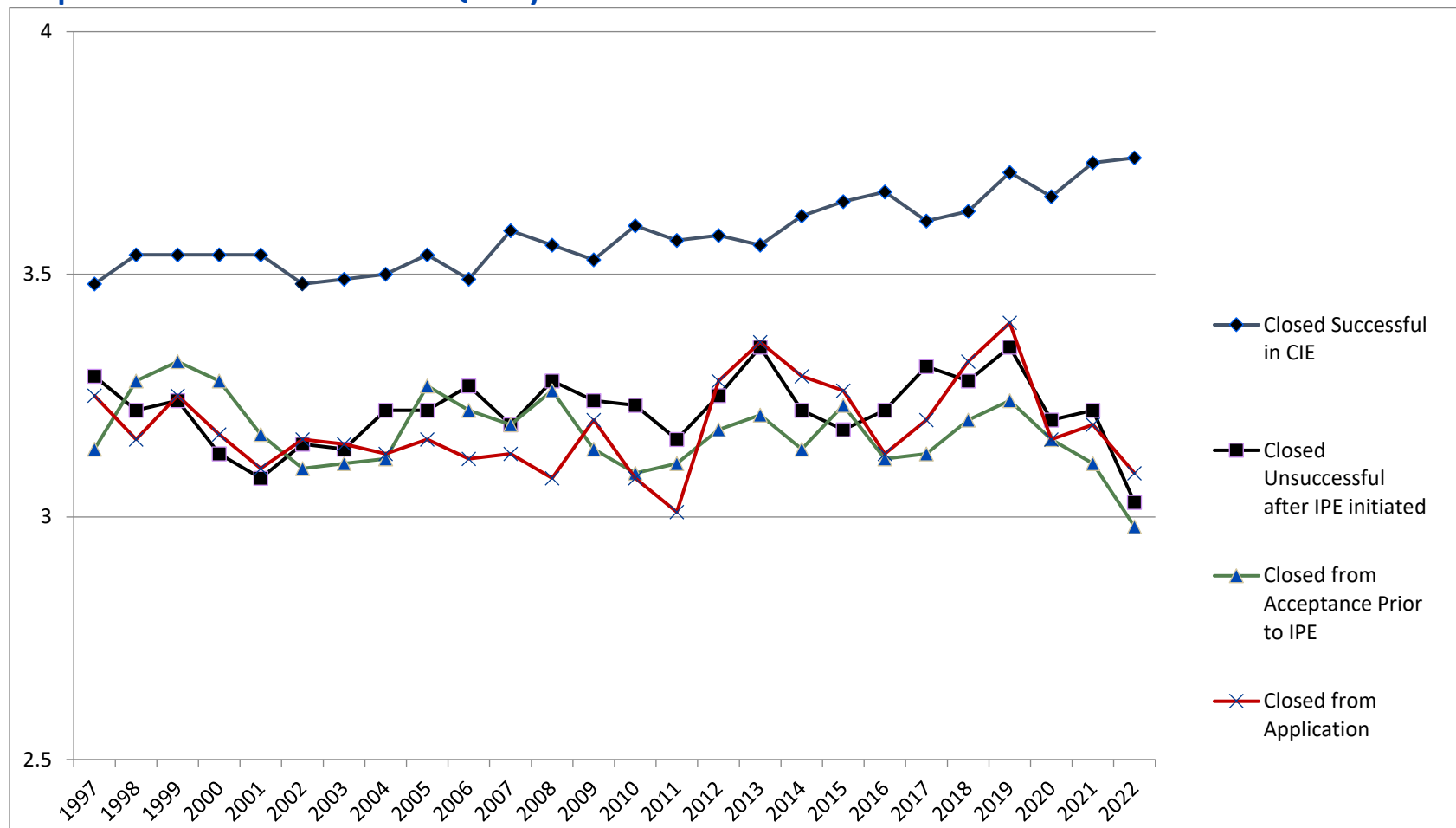
Closure Category	1997 Mean Rating	1998 Mean Rating	1999 Mean Rating	2000 Mean Rating	2001 Mean Rating	2002 Mean Rating	2003 Mean Rating	2004 Mean Rating	2005 Mean Rating	2006 Mean Rating	2007 Mean Rating	2008 Mean Rating	2009 Mean Rating
Closed Successful in CIE	3.48	3.54	3.54	3.54	3.54	3.48	3.49	3.50	3.54	3.49	3.59	3.56	3.53
Closed Unsuccessful after IPE initiated	3.29	3.22	3.24	3.13	3.08	3.15	3.14	3.22	3.22	3.27	3.19	3.28	3.24
Closed from Acceptance Prior to IPE	3.14	3.28	3.32	3.28	3.17	3.1	3.11	3.12	3.27	3.22	3.19	3.26	3.14
Closed from Application	3.25	3.16	3.25	3.17	3.10	3.16	3.15	3.13	3.16	3.12	3.13	3.08	3.20

Closure Category	2010 Mean Rating	2011 Mean Rating	2012 Mean Rating	2013 Mean Rating	2014 Mean Rating	2015 Mean Rating	2016 Mean Rating	2017 Mean Rating	2018 Mean Rating	2019 Mean Rating	2020 Mean Rating
Closed Successful in CIE	3.60	3.57	3.58	3.56	3.62	3.65	3.67	3.61	3.63	3.71	3.66
Closed Unsuccessful after IPE initiated	3.23	3.16	3.25	3.35	3.22	3.18	3.22	3.31	3.28	3.35	3.20
Closed from Acceptance Prior to IPE	3.09	3.11	3.18	3.21	3.14	3.23	3.12	3.13	3.20	3.24	3.16
Closed from Application	3.08	3.01	3.28	3.29	3.21	3.26	3.13	3.20	3.32	3.40	3.16

Closure Category	2021 Mean Rating	2022 Mean Rating
Closed Successful in CIE	3.73	3.74
Closed Unsuccessful after IPE initiated	3.22	3.03
Closed from Acceptance Prior to IPE	3.11	2.98
Closed from Application	3.19	3.09

Ratings on a 4-point scale in which 1 = very poor, 2 = poor, 3 = good, and 4 = very good

Graph: Overall Satisfaction with Quality of Services 1997 - 2022



Twenty-five years of data have been compiled to provide a historical perspective of overall satisfaction with the quality of services of the Kentucky Office of Vocational Rehabilitation. Most striking is the consistently high level of satisfaction expressed by those Successful in Competitive Integrated Employment.

Ratings on a 4-point scale in which 1 = very poor, 2 = poor, 3 = good, and 4 = very good