

**SUMMARY REPORT
CONSUMER SATISFACTION SURVEY**

**KENTUCKY OFFICE OF
VOCATIONAL REHABILITATION**

2019

**Submitted to the
Statewide Council for Vocational Rehabilitation
Consumer Services and Program Evaluation Committee
March 27, 2020**

**Prepared by
Katie Wolf Whaley, MSW, CESP
Human Development Institute
University of Kentucky**

TABLE OF CONTENTS

Page Number	Contents
3	Executive Summary
4	Summary Report - Introduction
6	Overall Service Quality
8	Counselor and Office Experiences
12	Employment Information
14	Case Closure
16.....	CRP Measures
17.....	Blind Services Measures
Appendix A	Comment Themes
Appendix B	Overall Satisfaction 1997 - 2019

A = Consumers with Positive Employment Outcome

B = Consumers with Cases Closed After Initiation of IPE

C = Consumers with Cases Closed Prior to IPE

D = Consumers with Cases Closed in Referral, Applicant, or Trial Work Experience

**All historical comparisons (1997-2018) reference years prior to the inclusion of those receiving Blind Services.*

**SUMMARY REPORT
CONSUMER SATISFACTION SURVEY
KENTUCKY OFFICE OF VOCATIONAL REHABILITATION
2019**

The Kentucky Office of Vocational Rehabilitation contracted with the Human Development Institute (HDI) at the University of Kentucky to provide information to the Office regarding the experiences of consumers of Vocational Rehabilitation with cases closed in fiscal year 2019. HDI works in concert with the University of Kentucky Survey Research Center (UKSRC) to contact consumers by telephone for a 34 item survey. This year’s survey added new questions for those who receive services specific to Blind Services. This is the first year this survey includes Blind Services*. The survey was conducted by trained interviewers between December 20, 2019 – March 2, 2020. There was a target of 1,000 completed interviews. The sample was drawn randomly, but stratified to appropriately reflect the proportions of consumers with cases closed among four closure categories. Of the eligible consumers who were contacted, (representing all four case closure categories and all districts of Kentucky), 1011 people completed the survey. This resulted in a response rate for this year's survey of 70.6%. The margin of error for this survey is $\pm 3\%$ at the 95% confidence level.

For the remainder of this report, consumer closure status groups will be referred to in the following manner:

- A Closed with Positive Employment Outcome (PEO)
- B Closed for other reasons after the Individualized Plan for Employment (IPE) was initiated
- C Closed for other reasons before the IPE was initiated
- D Closed from referral, applicant, or extended evaluation

NUMBER OF RESPONDENTS BY CASE CLOSURE CATEGORY

Closure Category Group	Number of Respondents	%
A	335	33.1
B	305	30.2
C	296	29.3
D	75	7.4
Total	1011	100

*All historical comparisons reference years that did not include Blind Services among those surveyed.

A = Consumers with Positive Employment Outcome

B = Consumers with Cases Closed After Initiation of IPE

C = Consumers with Cases Closed Prior to IPE

D = Consumers with Cases Closed in Referral, Applicant, or Trial Work Experience

**All historical comparisons (1997-2018) reference years prior to the inclusion of those receiving Blind Services.*

Respondent Demographics

Gender

The sample of respondents was close to even, with 48.0% women and 50.8% men participating.

Age

The average age of consumers across all closure categories was 43 years old. This is 2 years older than last year. The youngest person interviewed was 18 and the oldest was 93.

Race

White	78.8%
Black or African American	14.3%
White – Hispanic	2.3%

Other: 0.8% Asian, 0.7% White – Black or African American, 0.5% Hispanic, 0.5% Black or African American-Hispanic or Latino, 0.2% American Indian or Alaska Native; and 0.1% each: White - Asian, native Hawaiian-Hispanic, White - Black or African American-American Indian or Alaska Native, Black or African American – American Indian, American Indian – Hispanic.

Education

Survey participants' educational experiences ranged from respondents who indicated grade school up to those who had attained advanced postsecondary degrees. Just over 8% percent of those surveyed did not graduate from high school; this about the same as last year. Respondents who graduated high school or received a GED comprised 34% of respondents. Those who continued their education past high school made up 56.4% of the sample. This is up from 54% last year. Just over 22% went on to postsecondary education but had not completed their degree or certificate at this point. Approximately 34% of people in this sample had received a Vocational-Technical certificate, Associate's degree, Bachelor's degree, Master's degree, or higher. This is up 2.5% over last year's results.

Educational Level	% of Consumers
Grade School	1.4
Some High School	5.1
Special Education Certificate	2.0
High School Graduate / GED	34.0
Some College	22.4
College Graduate – Associate's Degree / Voc-Tech	15.0
College Graduate – Bachelor's Degree	12.5
Master's Degree or Higher	6.4
Not known	1.2
TOTAL	100

OVERALL SERVICE QUALITY

The item of greatest interest concerns overall service quality. Participants were asked to rate the overall quality of the services they received from the Office of Vocational Rehabilitation on a four-point scale (1 = very poor, 2 = poor, 3 = good, and 4 = very good) to calculate a mean or average score. For those individuals whose cases were closed prior to the initiation of services, this question referred to their overall feelings about the vocational rehabilitation system and the professionals with whom they interacted.

Regardless of case closure status, respondents indicated that overall services provided by the Office were good or very good (90.0%). This is 3.1% higher than was found in 2018. The overall rating is highest for those individuals who had achieved a positive employment outcome (97.6%). As has been the case over the past several years, we find that those respondents who were able to obtain employment were more likely to be satisfied with the services provided through the Office of Vocational Rehabilitation than those who did not.

OVERALL SATISFACTION WITH QUALITY OF SERVICES

Closure Category	Very Poor %	Poor %	Good %	Very Good %	Mean Rating
A (n=333)	0.3	2.1	23.4	74.2	3.71
B (n=300)	5.3	8.0	33.3	53.3	3.35
C (n=286)	5.6	9.1	40.9	44.4	3.24
D (n=72)	2.8	9.7	31.9	55.6	3.40
All (n=991)	3.5	6.5	32.1	57.9	3.44

A = Consumers with Positive Employment Outcome

B = Consumers with Cases Closed After Initiation of IPE

C = Consumers with Cases Closed Prior to IPE

D = Consumers with Cases Closed in Referral, Applicant, or Trial Work Experience

**All historical comparisons (1997-2018) reference years prior to the inclusion of those receiving Blind Services.*

Overall Satisfaction by District

The range of overall satisfaction by district can be found in the table below. Once again, all Districts averaged a score in the Good or Very Good range. While the rank order changes from year to year, it is important to note the sample size does not allow a rank order at a statistically significant level.

District	N	Good or Very Good Overall Satisfaction %	Mean Rating
1- Paducah	92	92.4	3.39
3 – Owensboro	52	88.5	3.40
4 - Bowling Green	65	95.4	3.51
5 Louisville	54	87.0	3.39
6 – Elizabethtown	57	87.7	3.37
7 – Danville	90	92.2	3.47
8 – Florence	26	77.0	3.15
9 – Lexington	97	90.7	3.52
10 - Prestonsburg	79	91.1	3.46
12 – Ashland	52	94.2	3.58
13 - Hazard	21	76.2	3.10
14 - Bluegrass	83	91.6	3.55
15 – East Jefferson	70	82.8	3.24
16 – Covington	27	88.9	3.33
17 - Somerset	81	90.2	3.59
85 – RCD	3	100	3.33
86 –Blind West	7	100	3.57
87 –Blind Central	14	100	3.57
88 – Blind East	21	90.5	3.52

A = Consumers with Positive Employment Outcome

B = Consumers with Cases Closed After Initiation of IPE

C = Consumers with Cases Closed Prior to IPE

D = Consumers with Cases Closed in Referral, Applicant, or Trial Work Experience

**All historical comparisons (1997-2018) reference years prior to the inclusion of those receiving Blind Services.*

COUNSELOR AND OFFICE EXPERIENCES

Survey participants were asked a series of questions related to their experiences with their counselor and the Vocational Rehabilitation office. Responses to these questions were rated on a Likert scale according to the following: “strongly disagree” = 1, “disagree” = 2, “agree” = 3, or “strongly agree” = 4.

Nearly all respondents (94.2%) agreed or strongly agreed that their counselor’s office was physically accessible. This is about the same as last year.

THE VOCATIONAL REHABILITATION OFFICE WAS PHYSICALLY ACCESSIBLE TO ME

	A	B	C	D	Overall
Mean Range	3.54	3.31	3.26	3.20	3.36

Approximately 96.8% of respondents agreed or strongly agreed that materials they received from the Office were in an accessible format. This shows that, overall, consumers are receiving materials and information in a way that meets their accessibility needs.

ALL MATERIALS I RECEIVED FROM VOCATIONAL REHABILITATION WERE IN AN ACCESSIBLE FORMAT

	A	B	C	D	Overall
Mean Range	3.55	3.35	3.37	3.40	3.43

Overall, 89.5% of respondents agreed or strongly agreed that they were able to get an appointment in what they considered a reasonable amount of time. This down about the same as last year.

I WAS ABLE TO GET AN APPOINTMENT WITH MY COUNSELOR IN A REASONABLE AMOUNT OF TIME

	A	B	C	D	Overall
Mean Range	3.41	3.17	3.19	3.16	3.25

A = Consumers with Positive Employment Outcome

B = Consumers with Cases Closed After Initiation of IPE

C = Consumers with Cases Closed Prior to IPE

D = Consumers with Cases Closed in Referral, Applicant, or Trial Work Experience

**All historical comparisons (1997-2018) reference years prior to the inclusion of those receiving Blind Services.*

Most consumers (96.4%) agreed or strongly agreed that they were treated courteously by Office staff, regardless of the type of case closure. This is 2% lower than last year.

I WAS TREATED COURTEOUSLY BY ALL STAFF

	A	B	C	D	Overall
Mean Range	3.63	3.39	3.45	3.45	3.49

Participants were asked if they felt that their counselor understood their disability. 91.9% percent agreed or strongly agreed that their counselor did understand their disability. Consumers with a positive employment outcome (Group A) reported the highest agreement that their counselors understood their disability.

MY COUNSELOR UNDERSTOOD MY DISABILITY

	A	B	C	D	Overall
Mean Range	3.56	3.25	3.28	3.28	3.36

Approximately 81.6% of consumers agreed or strongly agreed that their counselors were able to help them choose an appropriate job goal. This is up 2% over last year. It is not surprising that those who had achieved a positive employment outcome were most in agreement with this item.

MY COUNSELOR HELPED ME TO CHOOSE AN APPROPRIATE JOB GOAL

	A	B	C	D	Overall
Mean Range	3.33	2.95	2.96	3.06	3.08

Consumers were asked if their counselor helped them to understand their rights. 92.0% agreed or strongly agreed that their counselor had been helpful with regard to rights. This is about the same as the past 4 years.

MY COUNSELOR HELPED ME TO UNDERSTAND MY RIGHTS

	A	B	C	D	Overall
Mean Range	3.48	3.22	3.23	3.21	3.31

A = Consumers with Positive Employment Outcome

B = Consumers with Cases Closed After Initiation of IPE

C = Consumers with Cases Closed Prior to IPE

D = Consumers with Cases Closed in Referral, Applicant, or Trial Work Experience

**All historical comparisons (1997-2018) reference years prior to the inclusion of those receiving Blind Services.*

Consumers were asked if they knew whom to contact if they experienced a problem with their counselor. Overall, 77.1% agreed or strongly agreed that they did know what to do. This is 4.0% higher than last year.

I KNEW WHOM TO CONTACT IF PROBLEM WITH COUNSELOR

	A	B	C	D	Overall
Mean Range	3.18	2.91	2.97	2.99	3.02

Consumers were asked if their Counselor helped them to understand the services available to them. Approximately 88.2% indicated this occurred. This item was not asked of those in Group D.

MY COUNSELOR HELPED ME CLEARLY UNDERSTAND THE SERVICES AVAILABLE TO ME FROM VOCATIONAL REHABILITATION

	A	B	C	Overall
Mean Range	3.43	3.14	3.15	3.25

Consumers who received services through the Office were asked about the planning process. Those in Group A had a higher level of agreement (92.4%) than those in Group B (79.3%) when asked if their counselors worked with them to develop their Individualized Plan for Employment (IPE). Group A’s responses were 5% higher than that group last year while Group B was about the same.

MY COUNSELOR HELPED ME TO DEVELOP A PLAN OF ACTION TO GET A JOB OR TRAINING FOR A JOB

	A	B	Overall
Mean Range	3.31	2.98	3.13

In terms of consumer choice, those in Group A were more likely to strongly agree or agree that they felt free to choose the services that were received (95.1% Group A versus 84.9% of Group B strongly agreed or agreed with this item). Group A was slightly higher than last year’s response.

I FELT FREE TO CHOOSE THE TYPE OF SERVICES I RECEIVED

	A	B	Overall
Mean Range	3.39	3.12	3.26

A = Consumers with Positive Employment Outcome

B = Consumers with Cases Closed After Initiation of IPE

C = Consumers with Cases Closed Prior to IPE

D = Consumers with Cases Closed in Referral, Applicant, or Trial Work Experience

**All historical comparisons (1997-2018) reference years prior to the inclusion of those receiving Blind Services.*

Consumers in Groups A and B were asked if they felt that they were actively involved in their Individualized Plan for Employment (IPE). Those with cases closed successfully were more likely to agree or strongly agree (96.4%) than those in Group B (85.0%). While Group A increased almost 2.5%, Group B remained about the same.

I HAD AN ACTIVE ROLE IN MY REHABILITATION PLAN

	A	B	Overall
Mean Range	3.41	3.10	3.25

Consumers in Group A and B were asked if the services they received through their Individualized Plan for Employment (IPE) were provided in a timely manner. 93% of those in Group A agreed with this statement; this has remained steady for 7 years.

THE SERVICES I RECEIVED WERE PROVIDED IN A TIMELY MANNER

	A	B	Overall
Mean Range	3.38	3.13	3.26

A = Consumers with Positive Employment Outcome

B = Consumers with Cases Closed After Initiation of IPE

C = Consumers with Cases Closed Prior to IPE

D = Consumers with Cases Closed in Referral, Applicant, or Trial Work Experience

**All historical comparisons (1997-2018) reference years prior to the inclusion of those receiving Blind Services.*

EMPLOYMENT INFORMATION

Consumers were asked whether they were currently employed, either full or part-time. Those whose cases were closed with a positive employment outcome were much more likely to be employed than those in the other groups. 82.0% in Group A were employed at the time of the survey. The overall employment status was about the same as last year's results.

EMPLOYMENT STATUS

	A%	B%	C%	D%	Overall %
Yes	82.0	35.4	47.5	63.5	56.4
No	18.0	64.6	52.5	36.5	43.6

If a respondent indicated that he or she was currently employed, items related to job satisfaction were then asked. The mean satisfaction with the type of work and with salary was higher for those who achieved positive employment outcomes (A). As has been seen in previous surveys, overall satisfaction with salary was rated lower than satisfaction with type of work.

HOW SATISFIED ARE YOU WITH THE KIND OF WORK YOU DO?

	A	B	C	D	Overall
Mean Range	3.52	3.23	3.20	3.26	3.36

The overall mean is up from 3.34 last year. Overall, 93.6% of those employed stated they were satisfied or strongly satisfied with their work. This is an increase of 4.6% over 2018.

HOW SATISFIED ARE YOU WITH THE SALARY YOU RECEIVE?

	A	B	C	D	Overall
Mean Range	3.12	2.95	3.01	2.93	3.05

Overall, 81.9% of those employed stated they were satisfied or strongly satisfied with their salary. This is up 2.7% from last year.

Consumers who received services from the Office were asked if they felt that the services they received through Vocational Rehabilitation helped prepare them for their current jobs. 68.1 percent of those who achieved positive employment felt that Office services did help them prepare them for their job.

DO YOU FEEL THAT VOCATIONAL REHABILITATION SERVICES HELPED PREPARE YOU FOR A JOB?

	A% (n=257)	B% (n=106)
Yes	68.1	58.5
No	31.9	41.5

A = Consumers with Positive Employment Outcome

B = Consumers with Cases Closed After Initiation of IPE

C = Consumers with Cases Closed Prior to IPE

D = Consumers with Cases Closed in Referral, Applicant, or Trial Work Experience

*All historical comparisons (1997-2018) reference years prior to the inclusion of those receiving Blind Services.

Survey respondents were asked if there were any other services that could have helped them get or keep a job. Of those who responded yes, types of services that would be helpful included making more information available, having more knowledge of job opportunities, providing more funding for school, and for counselors to better understand limitations imposed by the respondent's disability.

Those in group A were asked additional questions to learn more about their employment situation. Those who were employed were asked if they make more than minimum wage. 91.0% reported that they, in fact, did. When asked if they receive benefits through their job, over half (54.6%) indicated that they did receive benefits. Those in group A who were not employed at the time of interview were asked how long they worked before leaving the job. Responses ranged from less than 3 months (4.2%) to more than a year (60.4%).

LENGTH OF TIME WORKED BEFORE LEAVING JOB

	A (n=56) %
Less than 3 months	4.2
3 to 6 months	14.6
6 to 9 months	6.3
9 months to a year	14.6
More than a year	60.4

A = Consumers with Positive Employment Outcome

B = Consumers with Cases Closed After Initiation of IPE

C = Consumers with Cases Closed Prior to IPE

D = Consumers with Cases Closed in Referral, Applicant, or Trial Work Experience

**All historical comparisons (1997-2018) reference years prior to the inclusion of those receiving Blind Services.*

CASE CLOSURE

The act of closing a consumer's case ends the formal contact the counselor has with a consumer. Overall, 71.3% responded knowing when their case was closed. This is up 3.5% from last year.

I KNEW WHEN MY CASE WAS CLOSED

	A%	B%	C%	D%	Overall %
Yes	78.2	70.6	64.6	70.0	71.3
No	21.8	29.4	35.4	30.0	28.7

Consumers were asked if their cases should have been closed. Of those asked, 77.7% agreed their case should have been closed, an increase of 4.4% from last year. Those in Group A were most in agreement with case closure at 90.3%, which is up 4.2% over last year.

SHOULD YOUR CASE HAVE BEEN CLOSED?

	A%	B%	C%	D%	Overall%
Yes	90.3	73.9	70.3	65.2	77.7
No	9.7	26.1	29.7	34.8	22.3

If the respondent felt that his or her case should not have been closed, the follow up question, "Why shouldn't your case have been closed?" was asked. The reasons given for the case not being closed fell within the following themes (as identified by interviewers): not yet employed, was not finished, insufficient services, need more training and that rehab did not help.

Consumers were asked about their level of awareness of reapplying for services. All groups responded similarly to last year. Overall, over ¾ of all respondents were aware they could reapply for services.

I KNOW THAT I CAN REAPPLY FOR SERVICES FROM VOCATIONAL REHABILITATION

	A%	B%	C%	D%	Overall%
Yes	81.0	77.0	79.9	79.7	79.4
No	19.0	23.0	20.1	20.3	20.6

A = Consumers with Positive Employment Outcome

B = Consumers with Cases Closed After Initiation of IPE

C = Consumers with Cases Closed Prior to IPE

D = Consumers with Cases Closed in Referral, Applicant, or Trial Work Experience

*All historical comparisons (1997-2018) reference years prior to the inclusion of those receiving Blind Services.

Consumers were asked if they would return to Vocational Rehabilitation in the future. Overall 92.7% of respondents asked this question indicated that they would. This is 3.4% higher than last year and continues to be a strong indication of satisfaction of services provided.

I WOULD GO BACK TO VOCATIONAL REHABILITATION IF I NEED TO

	A%	B%	C%	D%	Overall%
Yes	97.3	91.1	89.3	91.9	92.7
No	2.7	8.9	10.7	8.1	7.3

A = Consumers with Positive Employment Outcome

B = Consumers with Cases Closed After Initiation of IPE

C = Consumers with Cases Closed Prior to IPE

D = Consumers with Cases Closed in Referral, Applicant, or Trial Work Experience

**All historical comparisons (1997-2018) reference years prior to the inclusion of those receiving Blind Services.*

OVERALL SATISFACTION OF THOSE USING CRP SERVICES

Consumers who received services through a CRP (Community Rehabilitation Program) as part of their OVR services were asked to rate the quality of those services. Approximately 9.6% of survey respondents (98 people) did utilize CRP services. 68 respondents were in Group A, 30 respondents were in Group B. The following two questions were new in the 2013 survey.

Consumers were asked if they were satisfied with the services they received from their CRP and answers ranged from Strongly Disagree to Strongly Agree. Overall, 83.7% of those called reported agreeing or strongly agreeing with this question. This is about the same as last year.

SATISFIED WITH SERVICES I RECEIVED

	A%	B%	Overall%
Strongly Agree	45.6	23.3	38.8
Agree	44.1	46.7	44.9
Disagree	2.9	20.0	8.2
Strongly Disagree	7.4	10.0	8.2

Consumers were asked if they would recommend CRP service to someone else. 88% indicated that they would recommend the CRP service to someone else. This indicator is unchanged from last year.

WOULD RECOMMEND TO SOMEONE ELSE

	A%	B%	Overall
Strongly Agree	42.9	26.7	38.0
Agree	48.6	53.3	50.0
Disagree	4.3	13.3	7.0
Strongly Disagree	4.3	6.7	5.0

A = Consumers with Positive Employment Outcome

B = Consumers with Cases Closed After Initiation of IPE

C = Consumers with Cases Closed Prior to IPE

D = Consumers with Cases Closed in Referral, Applicant, or Trial Work Experience

**All historical comparisons (1997-2018) reference years prior to the inclusion of those receiving Blind Services.*

SATISFACTION OF THOSE USING BLIND SERVICES

This is the first year this survey has included consumers who would have been served by the former Office for the Blind and are now Office of Vocational Rehabilitation consumers. This year the survey added 6 new questions relating to services specific to Blind Services. Only people who received these services responded to these questions.

1. Did you receive training from the McDowell Center in Louisville (yes or no; if no skip to #3)
2. How would you rate your training at the McDowell Center? (4 – Excellent, 3-Good, 2-Fair, 1-Poor)
3. Did you receive services from the orientation and mobility staff? (yes or no; if no, skip to #5)
4. How would you rate the orientation and mobility services you received in supporting you in gaining independence and safe travel in your community? (4 – Excellent, 3-Good, 2-Fair, 1-Poor)
5. Did you receive Braille services? (yes or no; if no skip.)
6. How would you rate the Braille services you received? (4 – Excellent, 3-Good, 2-Fair, 1-Poor)

RATE SERVICES RECEIVED AT THE MCDOWELL CENTER

Eleven people surveyed received services at the McDowell Center. Of these, 91.9% rated services as Excellent or Good.

RATE ORIENTATION AND MOBILITY SERVICES

Fifteen people surveyed received Orientation and Mobility Services. Of these, 93.4% rated services as Excellent or Good.

RATE BRAILLE SERVICES

Six people surveyed received Braille Services. Of these, 100% rated services as Excellent or Good.

A = Consumers with Positive Employment Outcome

B = Consumers with Cases Closed After Initiation of IPE

C = Consumers with Cases Closed Prior to IPE

D = Consumers with Cases Closed in Referral, Applicant, or Trial Work Experience

**All historical comparisons (1997-2018) reference years prior to the inclusion of those receiving Blind Services.*

APPENDIX A

2019 Consumer Satisfaction Survey Open Ended Comments Summary

At the conclusion of the survey, respondents were asked if they had any comments they would like to share with the Office of Vocational Rehabilitation. Three hundred and fifty-nine individuals indicated that they did. This summary reflects themes found in the open ended comments as categorized by the interviewers.

Themes:

Helpful

Miscellaneous comments, questions or personal stories

Need more follow up

Not helpful

Unsure of services offered

Have recommended to others

Provide more financial aid

No comments

APPENDIX B

Consumer Satisfaction Survey Kentucky Office of Vocational Rehabilitation

Overall Satisfaction with Quality of Services Fiscal Years 1997 – 2019

Closure Category	1997 Mean Rating	1998 Mean Rating	1999 Mean Rating	2000 Mean Rating	2001 Mean Rating	2002 Mean Rating	2003 Mean Rating	2004 Mean Rating	2005 Mean Rating	2006 Mean Rating	2007 Mean Rating	2008 Mean Rating
A	3.48	3.54	3.54	3.54	3.54	3.48	3.49	3.50	3.54	3.49	3.59	3.56
B	3.29	3.22	3.24	3.13	3.08	3.15	3.14	3.22	3.22	3.27	3.19	3.28
C	3.14	3.28	3.32	3.28	3.17	3.1	3.11	3.12	3.27	3.22	3.19	3.26
D	3.25	3.16	3.25	3.17	3.10	3.16	3.15	3.13	3.16	3.12	3.13	3.08

Closure Category	2009 Mean Rating	2010 Mean Rating	2011 Mean Rating	2012 Mean Rating	2013 Mean Rating	2014 Mean Rating	2015 Mean Rating	2016 Mean Rating	2017 Mean Rating	2018 Mean Rating	2019 Mean Rating
A	3.53	3.60	3.57	3.58	3.56	3.62	3.65	3.67	3.61	3.63	3.71
B	3.24	3.23	3.16	3.25	3.35	3.22	3.18	3.22	3.31	3.28	3.35
C	3.14	3.09	3.11	3.18	3.21	3.14	3.23	3.12	3.13	3.20	3.24
D	3.20	3.08	3.01	3.28	3.29	3.21	3.26	3.13	3.20	3.32	3.40

Twenty-three years of data have been compiled to provide an historical perspective of overall satisfaction with the quality of services of the Kentucky Office of Vocational Rehabilitation. Most striking is the consistently high level of satisfaction expressed by those in Group A.

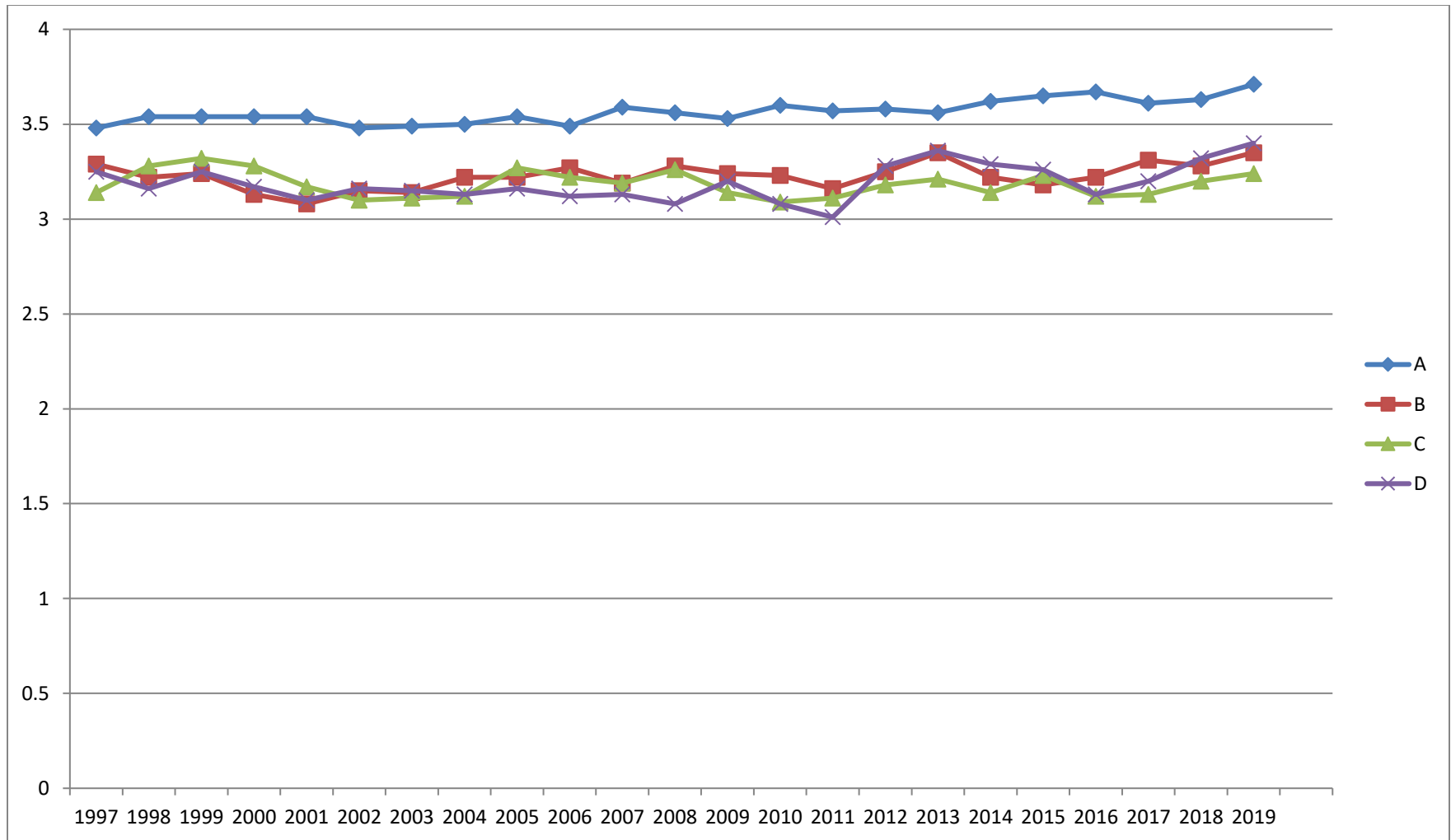
A = Consumers with Positive Employment Outcome

B = Consumers with Cases Closed After Initiation of IPE

C = Consumers with Cases Closed Prior to IPE

D = Consumers with Cases Closed in Referral, Applicant, or Trial Work Experience *All historical comparisons (1997-2018) reference years prior to the inclusion of those receiving Blind Services.

Graph: Overall Satisfaction with Quality of Services 1997 - 2019



A = Consumers with Positive Employment Outcome

B = Consumers with Cases Closed After Initiation of IPE

C = Consumers with Cases Closed Prior to IPE

D = Consumers with Cases Closed in Referral, Applicant, or Trial Work Experience

**All historical comparisons (1997-2018) reference years prior to the inclusion of those receiving Blind Services.*